

## IP Camera



| Model            | VCM-4100                   | VCM-4200                   | VCM-5611                             | VI-A6W                                      | VI-A8                                |
|------------------|----------------------------|----------------------------|--------------------------------------|---|--------------------------------------|
| Pickup Device    | 1/4" Colour CMOS           | 1/3" Colour CMOS           | 1/4" Colour CMOS                     | 1/6" Colour CMOS                            | 1/6" Colour CMOS                     |
| Lens             | 4.2 mm                     | 4.2 mm                     | 4.2 mm                               | 2.5 mm                                      | 2.9 mm                               |
| Resolution       | 640*480                    | 1280*1024                  | 1280*1024                            | 380 TV Lines                                | 380 TV Lines                         |
| Min.Illumination | 0.5 Lux                    | 0.5 Lux                    | 0.5 Lux                              | 0 Lux(12*IR on)                             | 1 Lux                                |
| Other Feature    | 25fps,MPEG4,Mic, Audio Out | 25fps,MPEG4,Mic, Audio Out | 25fps,MPEG4,Mic, Audio I/O,Alarm I/O | Wifi,25fps,H264,VGA, 5~10m Night View,A.I/O | PanTilt,25fps,H264, VGA,SD,Audio I/O |



| Model            | VIB-101                             | VIB-102                             | VIB-301X                           | VIB-351                            | VIB-901X                           |
|------------------|-------------------------------------|-------------------------------------|------------------------------------|------------------------------------|------------------------------------|
| Pickup Device    | 1/3" SONY Colour CCD                | 1/3" SONY Colour CCD                | 1/3" SONY SuperHAD Colour CCD      | 1/3" SONY SuperHAD Colour CCD      | 1/3" MICRON Colour CMOS            |
| Lens             | 3.5-8 mm                            | 3.5-8 mm MI                         | -                                  | -                                  | -                                  |
| Resolution       | 420 TV Lines                        | 480 TV Lines                        | 530 TV Lines                       | 530 TV Lines                       | 2M (1600x1200)                     |
| Min.Illumination | 0.1 Lux / 0.01 Lux                  | 0.1Lux/ 0.01Lux                     | 0.5 Lux(F1.2)                      | 0.5 Lux(F1.2)                      | 0.1 Lux(F1.2)                      |
| Other Feature    | 25fps,H264,D1,SD, Dual Stream,A.I/O | 25fps,H264,D1,SD, Dual Stream,A.I/O | Wifi,25fps,MPEG4, Email,Mirror,Mic | Wifi,25fps,MPEG4, Email,Mirror,Mic | Wifi,25fps,H264, Dual Stream,A.I/O |



| Model            | VIB-902                               | VID-101                                    | VID-901                         | VIH-201                      | VIH-202                      |
|------------------|---------------------------------------|--|---------------------------------|------------------------------|------------------------------|
| Pickup Device    | 1/2.8" SONY Colour CMOS               | 1/3" SONY Colour CCD                       | 1/2.8" SONY Colour CMOS         | 1/3" HD Colour CMOS          | 1/3" HD Colour CMOS          |
| Lens             | -                                     | 6 mm                                       | 3.6 mm                          | 3.6 mm                       | 2.8 mm                       |
| Resolution       | 2 Megapixel                           | 420 TV Lines                               | 2 Megapixel                     | 2 Megapixel                  | 2 Megapixel                  |
| Min.Illumination | 0.1 Lux / 0.01 Lux                    | 0 Lux(24*IR on)                            | 0.2 Lux / 0.01 Lux              | 0.1Lux/0 Lux(36*IR On)       | 0.1Lux/0 Lux(22*IR On)       |
| Other Feature    | H264,SD,Alarm,Audio, AC24V/DC12V, PoE | P/T,25fps,H264,D1,SD, 10~15m NV,2stream,A. | H264,SD,Alarm,Audio, DC12V, PoE | H264,Wifi DC12V, Indoor Dome | H264,Wifi DC12V, Indoor Dome |



| Model            | VIH-203                      | VIR-111                               | VIR-201                                 | VIR-202                                 | VIR-211                                 |
|------------------|------------------------------|---------------------------------------|---|---|---|
| Pickup Device    | 1/3" HD Colour CMOS          | 1/3" SONY SuperHAD Colour CCD         | 1/2.8" SONY Exmor Colour Sensor         | 1/2.8" SONY Exmor Colour Sensor         | 1/2.8" SONY Exmor Colour Sensor         |
| Lens             | 3.6 mm                       | 6 mm                                  | 3.6 mm                                  | 3.6 mm                                  | 3.6 mm                                  |
| Resolution       | 2 Megapixel                  | 480 TV Lines                          | 2 Megapixel                             | 2 Megapixel                             | 2 Megapixel                             |
| Min.Illumination | 0.1Lux/0 Lux(22*IR On)       | 0.3Lux/0 Lux(30*IR On)                | 0 Lux(30*IR On)                         | 0 Lux(24*IR On)                         | 0 Lux(36*IR On)                         |
| Other Feature    | H264,Wifi DC12V, Indoor Dome | 10~15m NV,25fps, H.264,2*Stream,A I/O | POE,15~25m NV,25fps, 1080p/D1,2 streams | POE,15~25m NV,25fps, 1080p/D1,2 streams | POE,15~25m NV,25fps, 1080p/D1,2 streams |



| Model            | VIR-301                       | VIR-900                 | VIR-901                     | VIR-921                                       | VIR-922                                      |
|------------------|-------------------------------|-------------------------|-----------------------------|---|--|
| Pickup Device    | 1/3" SONY SuperHAD Colour CCD | 1/3" Aptina Colour CMOS | 1/3" Sony Exmor Colour CMOS | 1/2.8" SONY Exmor 2MP CMOS Sensor             | 1/2.8" SONY Exmor 2MP CMOS Sensor            |
| Lens             | 6 mm                          | 3.6 mm                  | 6 mm                        | 2.8~10 mm                                     | 2.8~12 mm                                    |
| Resolution       | 380 TV Lines                  | 1.3 Megapixel           | 2 Megapixel                 | 1080p   | 1080p  |
| Min.Illumination | 0.5 Lux/0 Lux(30*IR on)       | 0 Lux(25*IR On)         | 0 Lux(25*IR On)             | 0 Lux (28*IR On) 30m                          | 0 Lux (2*IR Array) 30~50m                    |
| Other Feature    | 15~25m NV,25fps, MPEG4        | (D1)25fps,H264 2*Stream | (1080p)25fps,H264 2*Stream  | BLC,Flip,De-interlace, Auto IP,POE,Audio,Alam | WDR,BLC,De-interlace, Auto IP,POE,Audio,Alam |

\* All box cameras not include with lens unless mentioned.

\*\* Design & specification are subject to change without prior notice \*\*

## IP Camera



| Model            | VIR-B921                                      | VIR-D921                                      |  |  |  |
|------------------|---|---|--|--|--|
| Pickup Device    | 1/3" Progressive Scan<br>1.3MP CMOS Sensor    | 1/3" Progressive Scan<br>1.3MP CMOS Sensor    |  |  |  |
| Lens             | 4 mm  | 4 mm  |  |  |  |
| Resolution       | 960p  | 960p  |  |  |  |
| Min.Illumination | 0 Lux (2*IR Array) 30~50m                     | 0 Lux (2*IR Array) 20~30m                     |  |  |  |
| Other Feature    | 3D NR,BLC,De-interlace,<br>WDR,POE,Audio,Alam | 3D NR,BLC,De-interlace,<br>WDR,POE,Audio,Alam |  |  |  |



| Model            | INR-101                             | INR-102                             | INR-103                              | INSD-101W                               | INW-101                                    |
|------------------|-------------------------------------|-------------------------------------|--------------------------------------|---|--|
| Pickup Device    | 1/4" OVI Colour CMOS                | 1/4" OVI Colour CMOS                | 1/2.5" HD Colour CMOS                | 1/4" OVI Colour CMOS                    | 1/4" OVI Colour CMOS                       |
| Lens             | 3.6 mm                              | 3.6 mm                              | 6 mm                                 | 3.6 mm                                  | 3.6 mm                                     |
| Resolution       | 1 MegaPixel                         | 1 MegaPixel                         | 2 MegaPixel                          | 1 MegaPixel                             | 1 MegaPixel                                |
| Min.Illumination | 0.1 Lux/0.01 Lux                    | 0.1 Lux/0.01 Lux                    | 0.6 Lux/0.08 Lux                     | 0.1 Lux/0.01 Lux                        | 0 Lux(11*IR)                               |
| Other Feature    | 25fps,H.264,<br>22*IR LED,10~15m NV | 25fps,H.264,<br>48*IR LED,15~25m NV | 25fps,H.264,<br>2*IR Array,15~25m NV | 25fps,H.264,11*IR,<br>PanTilt,DC5V,Wifi | 360° Playback, H.264,<br>PanTilt,DC5V,Wifi |



| Model            | NRI-101                                   | VISD-A7W                                    | JK-001           |  |  |
|------------------|---|---|------------------|--|--|
| Pickup Device    | 1/4" OVI Colour CMOS                      | 1/4"<br>Colour CMOS                         | 1/4" Colour CMOS |  |  |
| Lens             | 3.6 mm                                    | 4.3 mm                                      | 3.6 mm           |  |  |
| Resolution       | 1 MegaPixel                               | 640*480                                     | 300 TV Lines     |  |  |
| Min.Illumination | 0.6 Lux/0.08 Lux                          | 0 Lux(9*IR On)                              | 3 Lux            |  |  |
| Other Feature    | Onvif,25fps,H.264,<br>24*IR LED,10~15m NV | 25fps,H264,Audio I/O,<br>2*Stream,Alarm I/O | 25fps, MJPEG     |  |  |

## IP SpeedDome



| Model            | VISD-01                               | ViSD-201  | ViSD-202                      | ViSD-203                      | ViSD-203HD                                      |
|------------------|---------------------------------------|---|-------------------------------|-------------------------------|---|
| Pickup Device    | 1/4" HITACHI<br>Colour CCD            | 1/4" SONY Super<br>HAD CCD II   | 1/4" SONY Super<br>HAD CCD II | 1/4" SONY Super<br>HAD CCD II | 1/3" 1.3M Aptina<br>CMOS                        |
| Lens             | 23x Optical Zoom                      | 23x Optical Zoom  | 30x Optical Zoom              | 36x Optical Zoom              | 18x Optical Zoom                                |
| Resolution       | 480 TV Lines                          | 600 TVL (Color), 650 TVL (B/W)  |                               |                               | 1.3Mpixel                                       |
| Min.Illumination | 0.07 Lux                              | 0.01 Lux (Color), 0.001 Lux (B/W)   |                               |                               | 0.05x(Color),0.005x(B/W)                        |
| Other Feature    | 25fps,H264,D1,<br>Hi-Speed PT,Alm.I/O | 25fps., H.264, D1, Super Low Lux, 16x Digital Zoom, Day/Night,<br>Audio I/O, Alarm I/O, High Speed Pan Tilt, 20 users Login |                               |                               | 1.3M(215fps),Audio I/O<br>720p(25fps), Alam I/O |



| Model            | VISD-221R                               | V-C1685BF               |  |  |  |
|------------------|---|-------------------------|--|--|--|
| Pickup Device    | 1/2.8" SONY Exmor<br>2.1MP CMOS Sensor  | 1/4" SONY<br>Colour CCD |  |  |  |
| Lens             | 20x Optical Zoom                        | 18x Optical Zoom        |  |  |  |
| Resolution       | 1080p                                   | 480 TV Lines            |  |  |  |
| Min.Illumination | 14*IR Array,120~150m                    | 1 Lux / 0.01 Lux        |  |  |  |
| Other Feature    | Heater,3D Pos,360°<br>WDR,IP66,TVS4000V | (Ipcam)D/N,360°Pan      |  |  |  |

\*\* Design & specification are subject to change without prior notice \*\*

## IP Camera



| Model            | <b>SNC-CS3P</b>                   | <b>SNC-CS50P</b>                         | <b>SNC-DF40P</b>     | <b>SNC-DF70P</b>              | <b>SNC-M1</b>    |
|------------------|-----------------------------------|--|----------------------|-------------------------------|------------------|
| Pickup Device    | 1/4" SONY Colour CCD              | 1/3" SONY ExWave Colour CCD              | 1/4" SONY Colour CCD | 1/4" SONY SuperHAD Colour CCD | 1/4" Colour CMOS |
| Lens             | 2.7x Optical Zoom                 | 2.9~8 mm(AI)                             | 3~8 mm(AI)           | 3~8 mm(AI)                    | 3.7 mm           |
| Resolution       | 480 TV Lines                      | 540 TV Lines                             | 480 TV Lines         | 480 TV Lines                  | 350 TV Lines     |
| Min.Illumination | 0.5 Lux                           | 0.4 Lux / 0.04 Lux                       | 0.8 Lux              | 0.9 Lux / 0.2 Lux             | 4.5 Lux          |
| Other Feature    | 25fps,MPEG4, very High Resolution | 25fps,MPEG4,Mic,D/N, X-HiRes,very LowLux | 25fps,MPEG4,Mic      | 25fps,MPEG4,Mic, Day/Night    | 25fps,MPEG4,     |



| Model            | <b>SNC-M1W</b>    | <b>SNC-M3</b>    | <b>SNC-M3W</b>        | <b>SNC-P1</b>        | <b>SNC-P5</b>        |
|------------------|-------------------|------------------|-----------------------|----------------------|----------------------|
| Pickup Device    | 1/4" Colour CMOS  | 1/4" Colour CMOS | 1/4" Colour CMOS      | 1/4" SONY Colour CCD | 1/4" SONY Colour CCD |
| Lens             | 3.7 mm            | 3.7 mm           | 3.7 mm                | 3.8 mm               | 3x Optical Zoom      |
| Resolution       | 350 TV Lines      | 350 TV Lines     | 350 TV Lines          | 400 TV Lines         | 400 TV Lines         |
| Min.Illumination | 4.5 Lux           | 4.5 Lux          | 4.5 Lux               | 1.2 Lux              | 3.5 Lux              |
| Other Feature    | 25fps,MPEG4, WiFi | 25fps,MPEG4,PTZ, | 25fps,MPEG4,PTZ, WiFi | 25fps,MPEG4,Mic      | 25fps,MPEG4,Mic      |



| Model            | <b>SNC-RX550P</b>                      | <b>SNC-RZ25P</b>                       | <b>SNC-RZ30P</b>                    | <b>SNC-RZ50P</b>                     | <b>SNC-Z20P</b>                     |
|------------------|--|--|-------------------------------------|--------------------------------------|-------------------------------------|
| Pickup Device    | 1/4" SONY ExWave Colour CCD            | 1/4" SONY Colour CCD                   | 1/6" SONY SuperHAD Colour CCD       | 1/4" SONY ExWave Colour CCD          | 1/4" SONY ExWave Colour CCD         |
| Lens             | 26x Optical Zoom                       | 18x Optical Zoom                       | 25x Optical Zoom                    | 26x Optical Zoom                     | 18x Optical Zoom                    |
| Resolution       | 460 TV Lines                           | 480 TV Lines                           | 480 TV Lines                        | 450 TV Lines                         | 460 TV Lines                        |
| Min.Illumination | 1 Lux / 0.15 Lux                       | 0.7 Lux / 0.06 Lux                     | 2.5 Lux / 0.1 Lux                   | 2.2 Lux / 0.3 Lux                    | 0.7 Lux / 0.06 Lux                  |
| Other Feature    | 25fps, H264, Day/Night Mic,PTZ,Low Lux | 25fps,MPEG4, D/N, Mic,PTZ,very Low Lux | 25fps, H264, Day/Night ,PTZ,Low Lux | 25fps,H264,Day/Night Mic,PTZ,Low Lux | 25fps,MPEG4,Day/Night ,very Low Lux |

## Network Video Server



| Model            | VNS-02                                  | VNS-11                | VNS-101                          | VCD-2100                                  | NVS-100PTZ            |
|------------------|---|-----------------------|----------------------------------|---|-----------------------|
| Video I/O        | In: 1*BNC                               | In: 1*BNC, Out: 1*BNC | In: 1*BNC                        | In: 1*BNC, Out: 1*BNC                     | In: 1*BNC, Out: 1*BNC |
| Audio I/O        | In: 1*BNC,1*Mic,<br>Out: 1*(3.5mm jack) | In: 1*RCA, Out: 1*RCA | In: 1*Mic<br>Out: 1*(3.5mm jack) | In: 1*(3.5mm jack)<br>Out: 1*(3.5mm jack) | -                     |
| Alarm I/O        | 4ch. / 2ch.(NO/NC)                      | 1ch. / 1ch.(NO/NC)    | 4ch. / 1ch.(NO/NC)               | 2ch. / 2ch(NO/NC)                         | -                     |
| Display/Rec.Rate | 25 / 25 fps.(max)                       | 25 / 25 fps.(max)     | 25 / 25 fps.(max)                | 25 / 25 fps.(max)                         | 25 / 25 fps.(max)     |
| Max.Resolution   | D1:(704*576)                            | D1:(704*576)          | D1:(704*576)                     | D1:(704*576)                              | 640*480               |
| Compression      | H.264                                   | H.264                 | H.264                            | MPEG4                                     | MJPEG                 |
| Other Feature    | IE, Email, PTZ                          | IE, Email, PTZ        | IE, Email, PTZ                   | IE, Email, PTZ                            | IE, PTZ               |



| Model            | WS04PLUS              |  |  |  |  |
|------------------|-----------------------|--|--|--|--|
| Video I/O        | In:4*BNC,Out:1(+Loop) |  |  |  |  |
| Audio I/O        | -                     |  |  |  |  |
| Alarm I/O        | 4ch. / 2ch(NO/NC)     |  |  |  |  |
| Display/Rec.Rate | 25 / 25 fps.(max)     |  |  |  |  |
| Max.Resolution   | D1:(704*576)          |  |  |  |  |
| Compression      | MJPEG                 |  |  |  |  |
| Other Feature    | IE, PTZ               |  |  |  |  |

## Network Recorder



| Model            | ViDR-401L             | ViDR-801L             | ViDR-1601L             | ViDR-3203            | ViSR-3016H                    |
|------------------|-----------------------|-----------------------|------------------------|----------------------|-------------------------------|
| Video In. (max)  | 4*D1/ 2*720p/ 1*1080p | 8*D1/ 4*720p/ 2*1080p | 16*D1/ 8*720p/ 4*1080p | 32ch; 16*1080p       | Rec.: 1080p*32ch,             |
| Video Out.       | 1*VGA, 1*HDMI         | 1*VGA, 1*HDMI         | 1*VGA, 1*HDMI          | 1*VGA,1*HDMI,1*TV    | Tx.: 1080p*16ch,              |
| Audio I/O        | -                     | -                     | -                      | -                    | Playback: 1080p*8ch<br>(max.) |
| Alarm I/O        | 4ch. / 3ch.(NO)       | 8ch./ 3ch.(NO)        | 16ch./ 3ch.(NO)        | 16ch./ 6ch.(NO)      |                               |
| Other I/O        | RJ45,RS485,USB,RS232  | RJ45,RS485,USB,RS232  | RJ45,RS485,USB,RS232   | RJ45,RS485,USB,RS232 | 2 x RJ45                      |
| Display/Rec.Rate | 100fps / depend Cam   | 200fps / depend cam.  | 400fps / depend cam.   | 800fps / depend cam. | depend on ip.cam.             |
| Compression      | H.264                 | H.264                 | H.264                  | H.264                | H.264                         |
| Other Feature    | support 2*3TB HDD     | support 2*3TB HDD     | support 2*3TB HDD      | support 8*HDD        | support 16*2TB HDD.           |



| Model            | VIH - 200K          | VDR-404D1B                    | iNR-3008                            |  |  |
|------------------|---------------------|-------------------------------|-------------------------------------|--|--|
| Video In. (max)  | Out: 1*VGA,1*HDMI   | 4ch. / 1*VGA,1*HDMI)          | (Out)1*VGA, 1*HDMI                  |  |  |
| Video Out.       |                     |                               |                                     |  |  |
| Audio I/O        | -                   | 1ch. / 1ch.(RCA)              | -                                   |  |  |
| Alarm I/O        | 4ch / 1 ch(N.O)     | -                             | -                                   |  |  |
| Other I/O        | 1*RJ45,RS485        | 1*RJ45,RS485                  | 1*RJ45                              |  |  |
| Display/Rec.Rate | 100 / 100 fps (max) | Coax/ UTP/ IP<br>1080p (max.) | 8*1080p/720p, 16*D1<br>(selectable) |  |  |
| Compression      | H.264               | H.264                         | H.264                               |  |  |
| Other Feature    | 4 IPC PnP           | Hybrid, PTZ, 1*HDB            | Hybrid, 2*HDB, ONVIF                |  |  |

\*\* Design & specification are subject to change without prior notice \*\*

# Network Recorder



| Model         | VDR-404D1B                          | ViHR-801                                    |  |  |  |
|---------------|-------------------------------------|---|--|--|--|
| Video I/O     | 4ch. / 3ch.(VGA,HDMI)               | 8*960H/2*720p/2*1080p<br>1*BNC,1*VGA,1*HDMI |  |  |  |
| Audio I/O     | 1ch. / 1ch.(RCA)                    | In:6*RCA,<br>Out:1*RCA                      |  |  |  |
| Alarm I/O     | -                                   | 4ch./ 1ch.(NC/NO)                           |  |  |  |
| Other I/O     | 1*RJ45,RS485                        | RJ45,RS485,USB,RS232                        |  |  |  |
| Rec.Res.(max) | (V)4*D1 /<br>(V)2*D1+1*1080p/2*720p | 200fps / depend cam.                        |  |  |  |
| Compression   | H.264                               | H.264                                       |  |  |  |
| Other Feature | Hybrid, PTZ, 1*HDB                  | support 2*HDD, Onvif                        |  |  |  |



| Model         | INVR-0401                            | INVR-0402                            | INVR-0801                            | INVR-0802                            | INVR-809H                            |
|---------------|--------------------------------------|--------------------------------------|--------------------------------------|--------------------------------------|--------------------------------------|
| Video I/O     | In:4*Cam,Out:1*BNC,<br>1*VGA, 1*HDMI | In:4*Cam,Out:1*BNC,<br>1*VGA, 1*HDMI | In:8*Cam,Out:1*BNC,<br>1*VGA, 1*HDMI | In:8*Cam,Out:1*BNC,<br>1*VGA, 1*HDMI | In:8*Cam,Out:1*BNC,<br>1*VGA, 1*HDMI |
| Audio I/O     | In:4*RCA,<br>Out:1*RCA               | In:1*RCA,<br>Out:1*RCA               | In:8*RCA,<br>Out:1*RCA               | In:1*RCA,<br>Out:1*RCA               | In:8*RCA,<br>Out:1*RCA               |
| Alarm I/O     | 1ch. / 1ch.(NO)                      | -                                    | 1ch. / 1ch.(NO)                      | 4ch. / 1ch.(NO)                      | 8ch. / 1ch.(NO)                      |
| Other I/O     | 1*RJ45,RS485                         | 1*RJ45,RS485                         | 1*RJ45,RS485,RS232                   | 1*RJ45,RS485                         | 1*RJ45,RS485,RS232                   |
| Rec.Res.(max) | (V)4*D1,(D)2*1080p<br>(selectable)   | (V)4*960H,(D)4*1080p<br>(selectable) | (V)8*D1,(D)2*1080p<br>(selectable)   | (V)8*960H,(D)8*1080p<br>(selectable) | (V)8*960H,(D)2*1080p<br>(selectable) |
| Compression   | H.264                                | H.264                                | H.264                                | H.264                                | H.264                                |
| Other Feature | Hybrid, PTZ, 1*HDB                   | Hybrid, PTZ, 1*HDB                   | Hybrid, PTZ, 2*HDB                   | Hybrid, PTZ, 1*HDB                   | Hybrid, PTZ, 2*HDB                   |



| Model            | iNR-1601G                             | INVR-1602                                     | IAVR-3201                                       | INVR-3202                                  |  |
|------------------|---------------------------------------|---|---|--|--|
| Video I/O        | In:16*V,Out:1*BNC,<br>1*VGA, 1*HDMI   | In:16*V,<br>Out:1*VGA, 1*HDMI                 | In:32*Cam,Out:2*BNC,<br>1*VGA, 1*HDMI           | In:32*Cam,Out:2*BNC,<br>1*VGA, 1*HDMI      |  |
| Audio I/O        | In:16*RCA,<br>Out:1*RCA               | In:4*RCA,<br>Out:1*RCA                        | In:16*RCA,<br>Out:1*RCA                         | In:16*RCA,<br>Out:1*RCA                    |  |
| Alarm I/O        | 8ch. / 1ch.(NO)                       | 4ch. / 1ch.(NO)                               | 8ch. / 1ch.(NO)                                 | 16ch. / 1ch.(NO)                           |  |
| Other I/O        | 1*RJ45,RS485,RS232                    | 1*RJ45,RS485,RS232                            | 1*RJ45,RS485,RS232                              | 1*RJ45,RS485,RS232                         |  |
| Display/Rec.Rate | (V)16*960H,(D)4*1080p<br>(selectable) | (V)16*960H,(D)8*1080p<br>16*960p (selectable) | (V)32*CIF,(D)8*720p,<br>2*1080p+2*720p,(select) | (V)8*D1+24*CIF,<br>(D)4*1080p,(selectable) |  |
| Compression      | H.264                                 | H.264   | H.264   | H.264                                      |  |
| Other Feature    | Hybrid, PTZ, 2*HDB                    | Hybrid, PTZ, 2*HDB                            | Hybrid, PTZ, 4*HDB                              | Hybrid, PTZ, 4*HDB                         |  |



| Model            | NSR-25                            | NSR-50                                 | NSR-100                                |  |  |
|------------------|-----------------------------------|--|--|--|--|
| Video I/O        | In:20*Cam,Out:1*RGB               | In:32*Cam,Out:1*RCA,<br>1*Svideo,1*RGB | In:64*Cam,Out:1*RCA,<br>1*Svideo,1*RGB |  |  |
| Audio I/O        | In:1*Mini jack,<br>Out:1*RCA(L/R) | In:2*Mini jack,<br>Out:2*RCA(L/R)      | In:2*Mini jack,<br>Out:2*RCA(L/R)      |  |  |
| Alarm I/O        | 8ch. / 8ch.(NO/NC)                | 8ch. / 8ch.(NO/NC)                     | 8ch. / 8ch.(NO/NC)                     |  |  |
| Other I/O        | 1*RJ45,2*USB,RS232                | 3*RJ45,4*USB,RS232                     | 3*RJ45,4*USB,RS232                     |  |  |
| Display/Rec.Rate | 100 / 100 fps.(max)               | 200 / 200 fps.(max)                    | 400 / 400 fps.(max)                    |  |  |
| Compression      | MPEG4                             | MPEG4                                  | MPEG4                                  |  |  |
| Other Feature    | PTZ, Masking                      | PTZ, Masking                           | PTZ, Masking                           |  |  |

## IP Camera c/w Network DVR (Standalone)

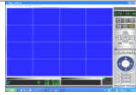


|               |                                    |  |  |  |  |
|---------------|------------------------------------|--|--|--|--|
| Model         | <b>INH-401</b>                     |  |  |  |  |
| Video I/O     | (In) 4*Wifi IPCam,<br>(Out) 1*HDMI |  |  |  |  |
| Audio I/O     | -                                  |  |  |  |  |
| Alarm I/O     | -                                  |  |  |  |  |
| Other I/O     | 1*RJ45                             |  |  |  |  |
| Rec.Res.(max) | 720p                               |  |  |  |  |
| Compression   | H.264                              |  |  |  |  |
| Other Feature | Wifi Auto,1*HDD Bay                |  |  |  |  |

## Monitoring Software



|                       |   |   |   |   |   |
|-----------------------|---|---|---|---|---|
| Model                 | <b>IMZ-RS301</b>  | <b>IMZ-RS304</b>  | <b>IMZ-RS308</b>  | <b>IMZ-RS316</b>  | <b>IMZ-RS332</b>  |
| Ch. Supported         | 1 ch.   | 4 ch.   | 8 ch.   | 16 ch.  | 32 ch.  |
| Compression           | MPEG4   | MPEG4   | MPEG4   | MPEG4   | MPEG4   |
| Feature               | Intelligent functions,<br>E-map,E-mail,Masking,<br>Log report | Intelligent functions,<br>E-map,E-mail,Masking,<br>Log report | Intelligent functions,<br>E-map,E-mail,Masking,<br>Log report | Intelligent functions,<br>E-map,E-mail,Masking,<br>Log report | Intelligent functions,<br>E-map,E-mail,Masking,<br>Log report |
| PC System Requirement | ≥ Windows2000,XP,<br>2003Server,512MB,<br>P4 2.66GHz          | ≥ Windows2000,XP,<br>2003Server,512MB,<br>P4 2.66GHz          | ≥ Windows2000,XP,<br>2003Server,512MB,<br>P4 2.66GHz          | ≥ Windows2000,XP,<br>2003Server,512MB,<br>P4 2.66GHz          | ≥ Windows2000,XP,<br>2003Server,512MB,<br>P4 2.66GHz          |



|                       |   |   |  |  |  |
|-----------------------|---|---|--|--|--|
| Model                 | <b>VSW-101</b>  | <b>VSW-201</b>  |  |  |  |
| Video I/O             | 16 ch.  | 64 ch.  |  |  |  |
| Compression           | MPEG4   | H.264   |  |  |  |
| Feature               | Intelligent functions,<br>E-map,E-mail,Masking,<br>Firmware upgrade | Intelligent functions,<br>E-map,E-mail,Masking,<br>Firmware upgrade |  |  |  |
| PC System Requirement | ≥ Windows2000,XP,<br>2003Server,512MB,<br>P4 2.66GHz                | ≥ Windows2000,XP,<br>2003Server,512MB,<br>P4 2.66GHz                |  |  |  |

\*\* Design & specification are subject to change without prior notice \*\*