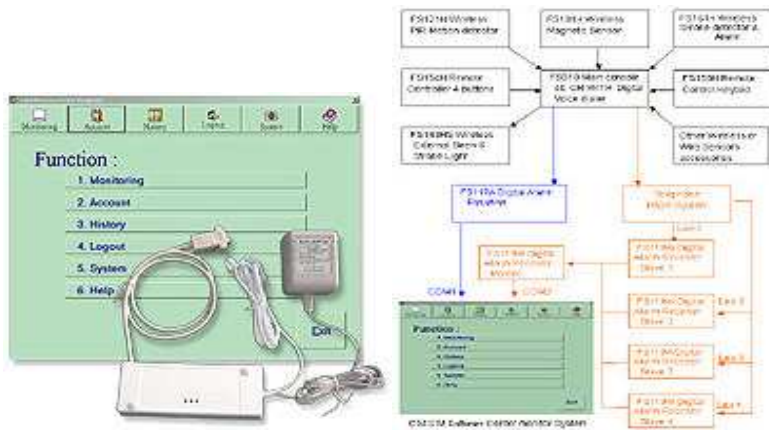


FS119 DIGITAL ALARM RECEIVER FOR CENTRAL MONITORING STATIONS



The FS119A/FS119W are Digital Alarm receivers that receives signals through a 6pin wire cable (FS119A) and via telephone line (FS199W) from Security Main Console with Digital dialers.

The FS119A can connect FS210 Main Console units and the FS119w can connect standard telephone lines to PC systems for Central Monitoring Station use.

The FS119W can receive data from PABX phone line system also can direct to receive the data from FS210 main console and offer a DB 9 COM port to connect PC system for sent the data. The center monitoring station can setup up to 4 phones line for 4 slaves FS119W Digital Alarm receiver and one master FS119W Digital Alarm receiver to PC C.M.S.M Software system.

The C.M.S.M (Central Monitor Security Management) software features an easy to use windows based customer alarm data management system. The hardware and software is specially designed for alarm service company, shop, office and factory Central Monitoring Stations.

FS119 - FEATURES

- Communication type series data input and RS232 series data output. (FS119A)
- With 6pin cable wire connector to FS210 main console for receive data and one DB9 COM port output data to PC. (FS119A)
- 3 LED indicators for Power On/ Off, receive data and data memory condition. (FS119A)
- Communication type DTMF data input and RS232 series data output. (FS119W)
- RJ11 type phone jack receive data and one DB9 COM port output data. (FS119W)
- Telephone line interruption alarm beep sound and LED display phone line working condition. (FS119W)
- Master or slave option setup sent out data to PC C.M.S.M Software system or FS119W. (FS119W)
- Protocol receiver Reception format: 4 + 2 + 2 (other protocol are also available by customer request) (FS119W)
- 3 LED indicators for Power On/ Off, Telephone Line and data memory condition. (FS119W)
- Alarm Receiver data buffer allows stacking of up to 4 events per receiver. (FS119W)
- Up to eight FS119W Digital Alarm receiver per PC. (FS119W)
- Two-way flow controls to make sure no event is lost. (FS119A/FS119W)

FS119 - SPECIFICATIONS

- Supports COM 1-8 port.
- Up to 9999 customers.
- Unlimited number of events. (Disk capacity dependent).

- Data and employee access level protected by Password.
- Windows based systems for 98X, 2000 and XP.
- Keyboard commands for easy display control.
- Guide to solving events & troubleshooting.
- Flexible reporting with various editing formats.
- Multi operator log-in and log-out password security management